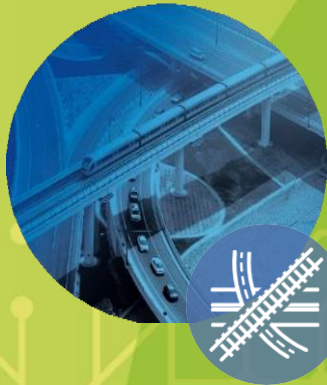


# Importance of sustainable urban mobility in greening the cities



Future Formats 2024, Essen, 27/02/2024

Piotr Rapacz, DG ENV

# Context

- The **European Green Deal** calls for a 90% reduction in greenhouse gas emissions from transport by 2050
- **Transport-related CO2 emissions** - around 25% of all emissions
- **Road transport** responsible for 3/4
- **Directly linked** with air quality, noise, biodiversity, public space, **impacting** health and quality of life in cities

## QUALITY OF LIFE IN EUROPEAN CITIES, 2023



### MOVING AROUND IN MY CITY

Mode of transport used more often on a typical day \*\*



#### TOP-3 EU cities by transport mode

	Braga	70%		Prague	71%
	Palermo	63%		Paris	62%
	Nicosia	63%		Bucharest	61%
	Paris	40%		Groningen	46%
	Stockholm	38%		Amsterdam	39%
	Helsinki	36%		Copenhagen	35%

# EU Urban mobility policy – key milestones

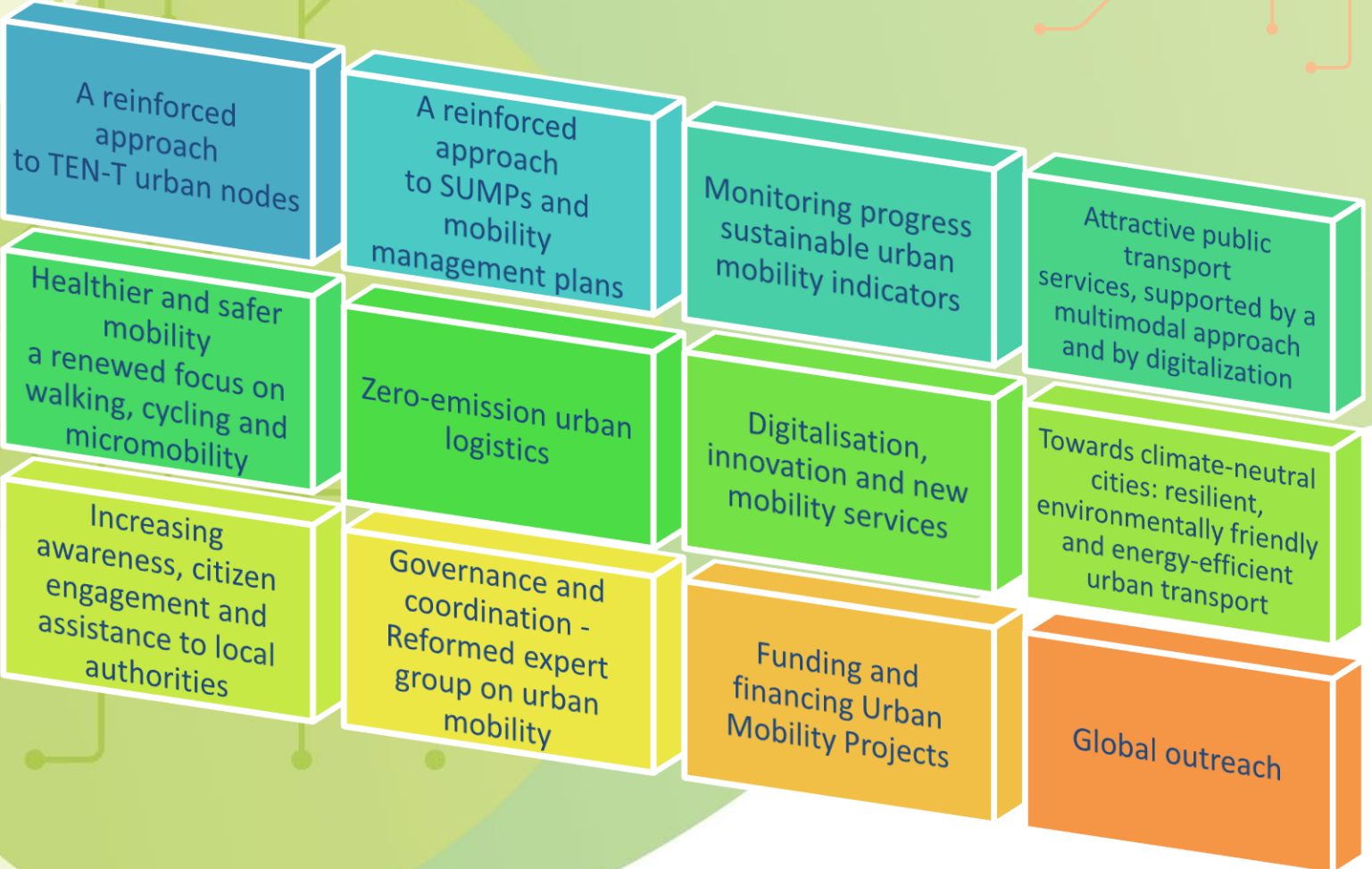


- 2013 – EU Concept for Sustainable Urban mobility Planning in the urban mobility package
- 2019 – new version of the SUMP Guidelines
- 2020 - Sustainable and Smart Mobility Strategy (SSMS)
- 2021 – New EU urban mobility framework
- 2021 – Proposal for a revised TEN-T Regulation (urban nodes)
- 2022 – Reformed Expert Group on Urban Mobility (EGUM)
- 2023 – Commission recommendation on National SUMP support programmes
- 2023 – Updated EU Concept for SUMPs
- ...
- 2024 – Entry into force of the revised TEN-T Regulation
- 2025 – Target date for urban nodes requirements on SUMP and SUMI (COM proposal)

Evolution of Response Framework

# New EU Urban mobility framework (2021)

## Building blocks



# Sustainable Urban Mobility Plans

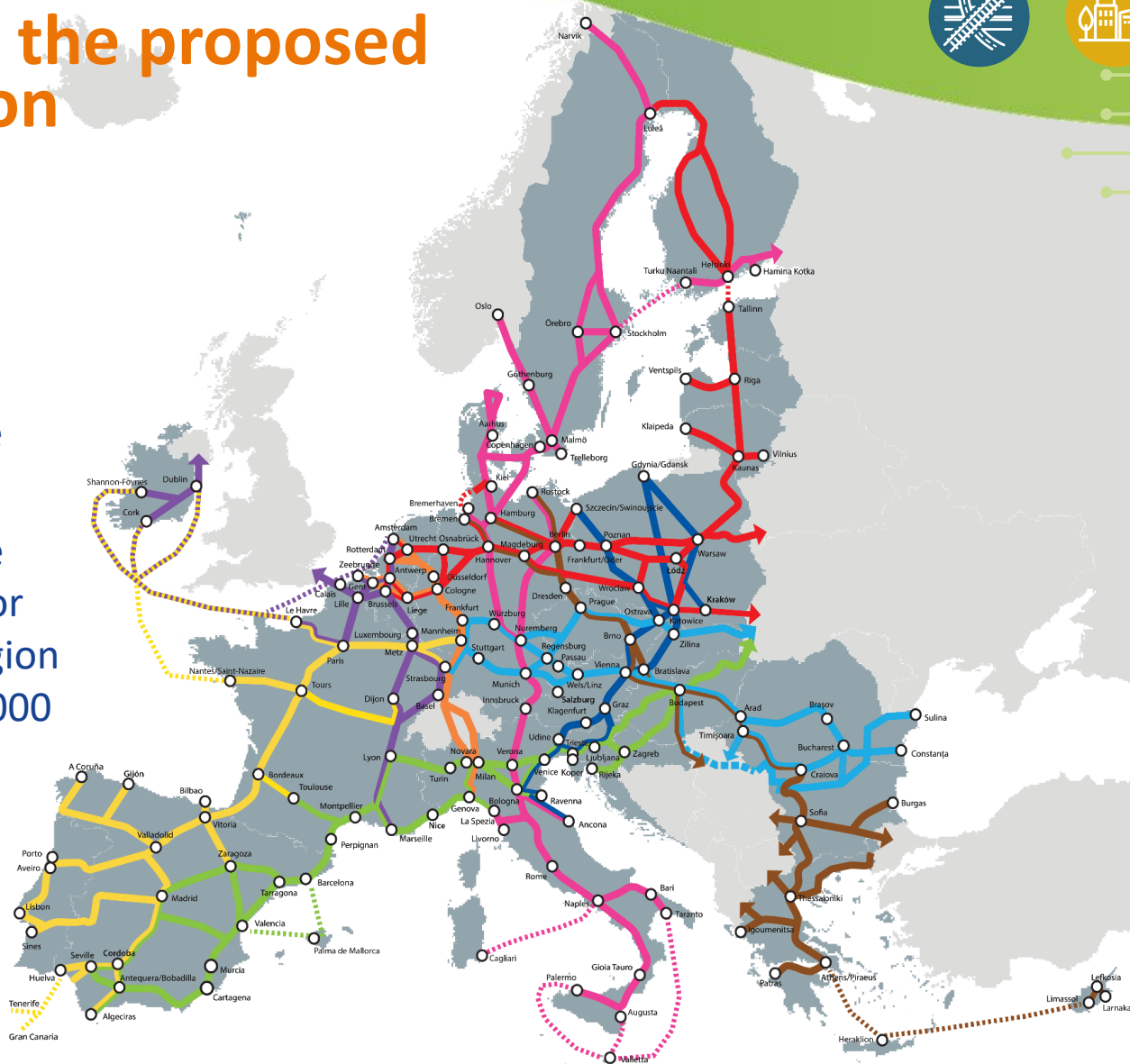


- **Sustainable Urban Mobility Plans (SUMP)** as “cornerstone” for urban mobility planning under new Urban Mobility Framework
- A SUMP is a **strategic plan & a process at the same time**: developed in an inclusive and integrated way in order to meet the mobility needs of people and businesses in cities, and to harmonize and integrate existing planning approaches for a better quality of life.
- Engaging with **participatory approach** and evaluation principles.
- Covers the entire **functional urban area** (city and commuter zone)
- For all urban areas irrespective of their size
- **Quality, evidence base and effectiveness are important** - monitoring and indicator framework



# Urban nodes in the proposed TEN-T Regulation

- Reinforced role of urban nodes in the new TEN-T – “Enhancing Corridor Connectivity”
- 430 urban nodes along the network
- Urban node criteria: more than 100,000 inhabitants or main node of a NUTS 2 region in case no city above 100,000 inhabitants
- Aim: better links between long-distance and local, regional transport



## Requirements:

1. Adopt a sustainable urban mobility plan (SUMP)
2. Collect and report data on key urban mobility indicators
3. Develop multimodal passenger hubs
4. Develop logistic terminals

# EU urban mobility tools and initiatives





EUROPEAN UNION



# EU MISSIONS

CLIMATE-NEUTRAL & SMART CITIES

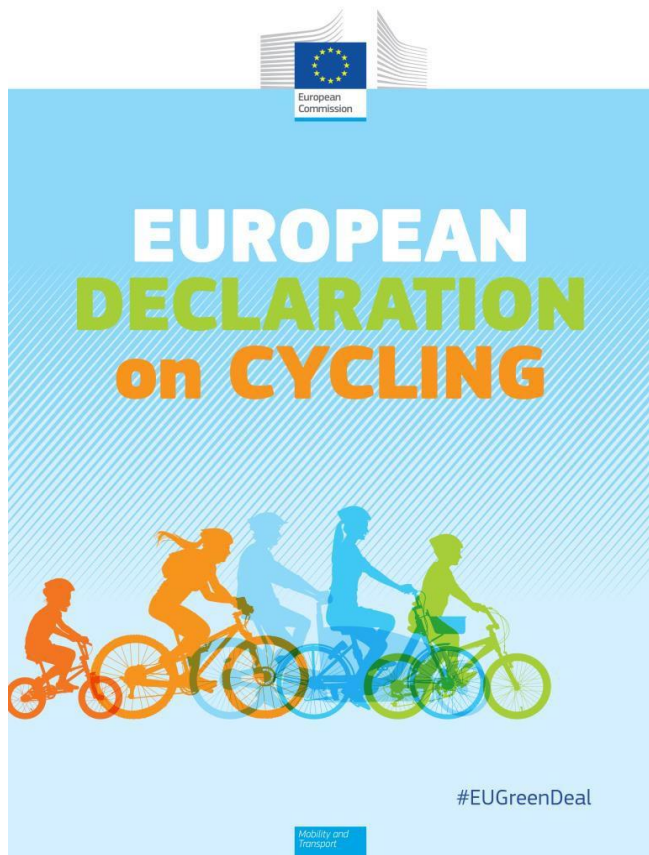
Concrete solutions for our greatest challenges



[#EUmissions](#) [#HorizonEU](#) [#MissionCities](#)

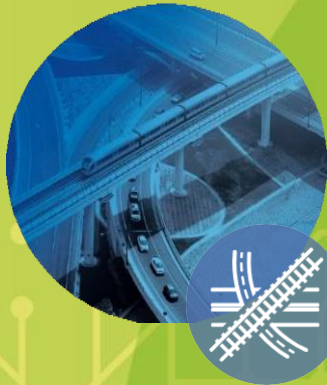


# European Cycling Declaration



- **EC proposal for a European Declaration on Cycling [COM(2023) 566 final]** adopted on 4/10/2023
- Ongoing: **interinstitutional dialogue** with EP and Council aiming at adoption of a joint declaration by April 2024





Thank you for your attention!